



NAVA™

I N V E N T O R Y

NAVA™ Inventory is an integrated web-based solution that offers comprehensive stock control, enables tracking and enquiries on stock location, condition, dimension, quantity and costing.

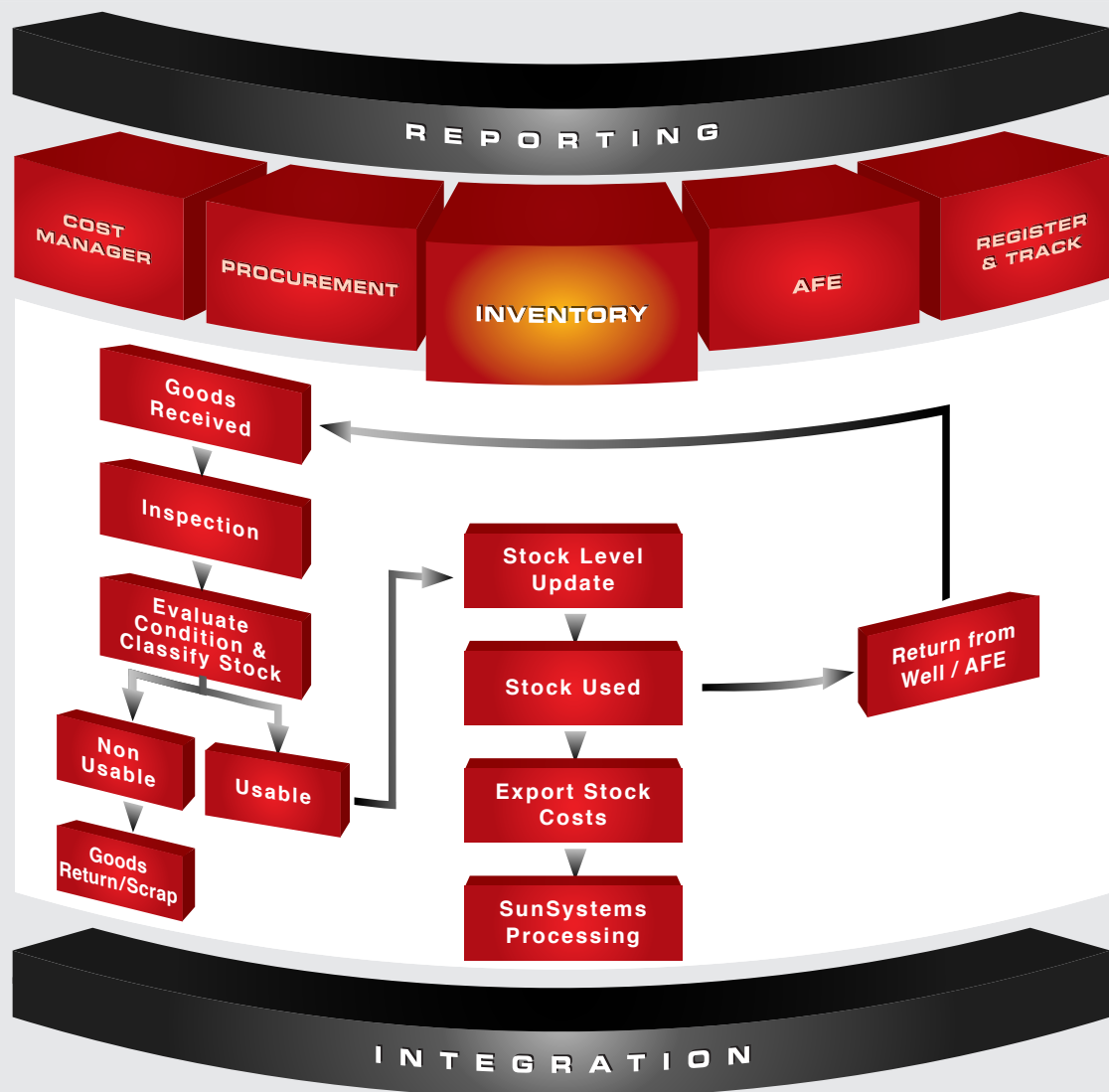
NAVA™ Inventory manages different types of stock movements including stock receipt, issue, transfer and adjustments. Stock receipts and releases can be easily tracked for new purchases or returns to AFE's, locations and wells.

Stock management is facilitated through entry of receiving data including (i) "over, short and damaged" (OS&D) information, (ii) multiple warehouse, bin and/or laydown locations, (iii) reusable stock issue & return status and (iv) condition and remaining useable life coding.

Unit conversion enables goods receipts to be issued out in different unit of measurement, tracking of bulk-breaking and stock issue by applicable quantities. Various methods of stock costing such as LIFO, FIFO or average weighted by warehouse, location and bin allows for accurate stock valuation.

A comprehensive stock master which contains the material characteristics provides transparency in stock handling. The process is simplified and maximised efficiency is achieved.

Real time checking on stock availability during stock movements (issue and transfer) provides control for stock management.





KEY FEATURES

REGISTRATION

Auto-numbering of material coding during new material registration enhances internal control and reporting. User-defined numbering allows incorporation of material category and sub-category as part of the number structure for easy reference.

Materials can be identified to new purchase and consignment. The stock conditions (new, damaged, repaired & inspected) and storages (warehouse, location & bin) are recorded during data entry providing relevant information for reporting and stock management.

Stock adjustment which may arise from stock-take and stock transfer between storages reflect an accurate stock level.

Multiple currencies and exchange rates can be defined for companies with world-wide operations. For stock receipts the transaction currency is entered and automatically converted into the company's reporting currency (base currency). The stock is issued at base currency for synchronisation of stock valuation.

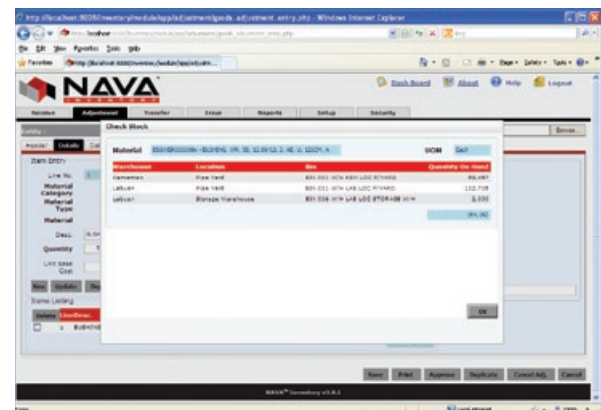
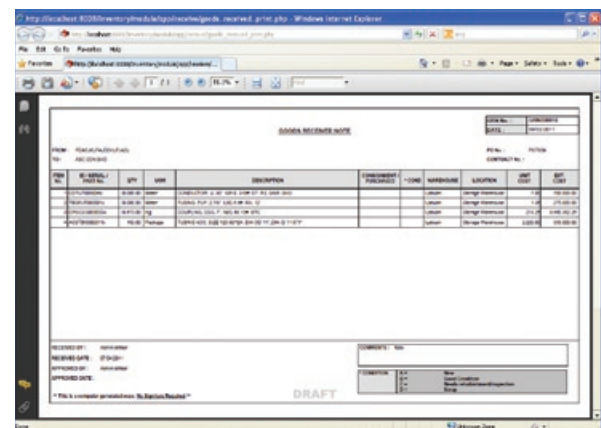
Scanned documents can be attached and later viewed via the workflow process, providing supporting documents before approval.

REVIEW

Stock movement documents such as Goods Received Note, Goods Issue Note, Adjustment Form and Transfer Form can be generated for approvals and signatures.

Stock movement enquiry provides quick database search and takes users directly to the event and scanned documents for viewing and verification.

Stock enquiry such as stock balance by warehouse, location and bin can be viewed online, giving early warning of minimum stock level.

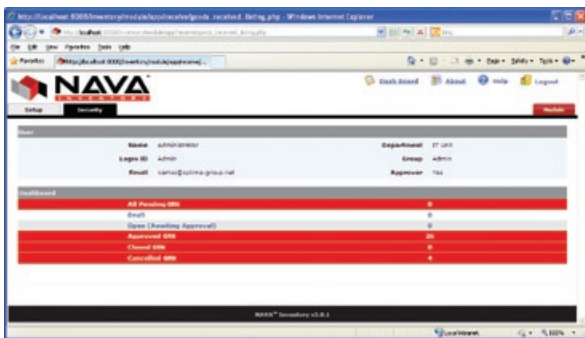




APPROVAL

Stock movements with status of "awaiting approval" can be approved or cancelled by authorised users.

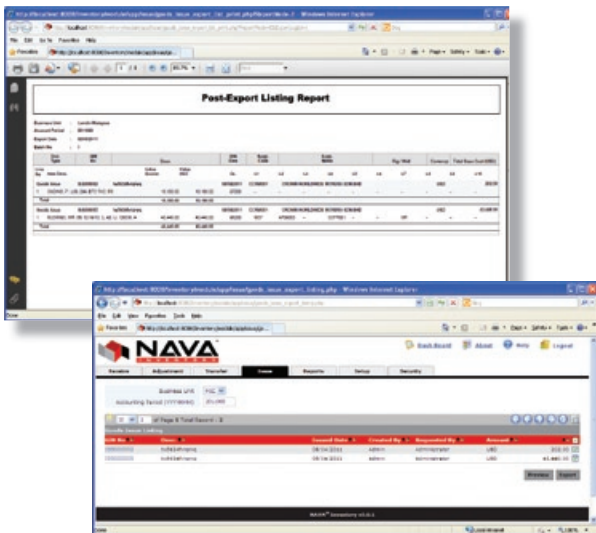
Both manual approvals and online approvals via workflow are accommodated to meet the requirements of your company.



INTERFACES

Approved stock movements are uploaded to the actual ledger in Infor™ FMS SunSystems to facilitate reporting.

Export Validation Report (listing approved stock movements) allows checking prior to the actual export of data. Export Document Report (listing stock movements actually exported) is available for the purpose of audit control.

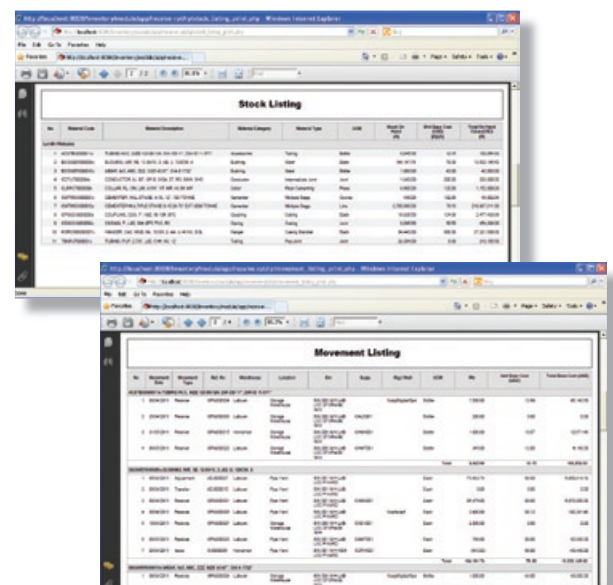
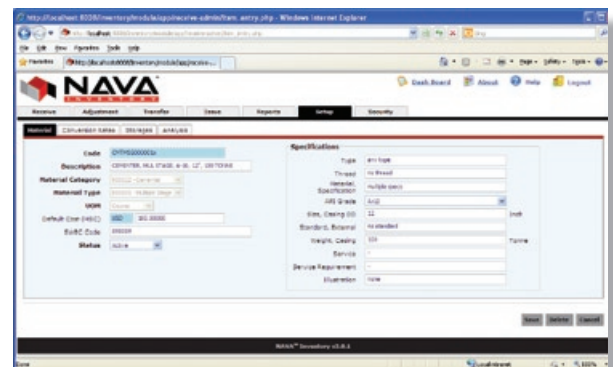


TRACKING & REPORTING

Stock movements can be tracked easily to its location, condition and status using tools such as stock movement enquiry and the workflow dashboard.

Standard reports include KPI showing stock turnover and average processing days. Detail reports for Goods Receive, Goods Issue, Goods Transfer and Adjustment listing the source of the materials, its destinations, storages, dates, requesters/approvers, departments and status.

Stock listing report provides detail of material characteristics such as description, size, type and cost.





NAVA™ SUITE

NAVA™ Suite provides a comprehensive range of modules that meet the business process and management needs of your company.

- NAVA™ AFE (Authorisation For Expenditure)
- NAVA™ Register & Track
- NAVA™ Cost Manager
- NAVA™ Procurement
- NAVA™ Inventory

NAVA™ was created with both simplicity and usability in mind. Its success is proven with implementation that required minimum training for end users and system administrators.

Reporting combines information from Infor™ FMS SunSystems and NAVA™, producing consolidated and comprehensive reporting. Multi-currency reporting with transaction, local and base currency cater for companies with world-wide operations.

Seamless integration with Infor™ FMS SunSystems ensures that account codes, analysis codes and business rules are instantly available in NAVA™.

Transactions entered in NAVA™ can be directly uploaded into Infor™ FMS SunSystems without the need of building time consuming and costly interfaces.

APPLICATION FEATURES

- The application is web-based, capable of supporting multiple locations world-wide in real time.
- Comprehensive built-in security supports creation and management of role-based user groups for every key function within the application.
- The application can be fully configured and easily re-configured by system administrators as the business changes and develops.
- NAVATerm™ allows the company to use their own terminology to describe key data elements for ease of use and reference.
- Ready-built standard reports ensure rapid implementation and customised reports allow for enhanced reporting. All reports can be exported into various formats e.g. Microsoft® Excel, Microsoft® Word or PDF.
- Scanned documents can be attached during data entry and form part of the company's document management and control procedures. This includes technical drawings, contracts, purchase orders, invoices, general correspondences and emails.
- Emails alert decision-makers on important milestones i.e. budgetary constraints and status of events in the workflow. Hyperlink provided in the emails brings user directly to the relevant event for further processing.
- A Workflow Dashboard is available and tailored based on the role of the user, providing an overview of events that required processing.
- Application development employs commonly used Microsoft technology running on SQL Server database.



Nava (Systems) Limited

Emerald House, East Street, Epsom, Surrey, KT17 1HS, United Kingdom